

- Legend**
- 1 - Spots / Clumps
  - 2 - Scattered
  - 3 - Dominant
  - 4 - Highly Dominant
  - 5 - Surface Matted

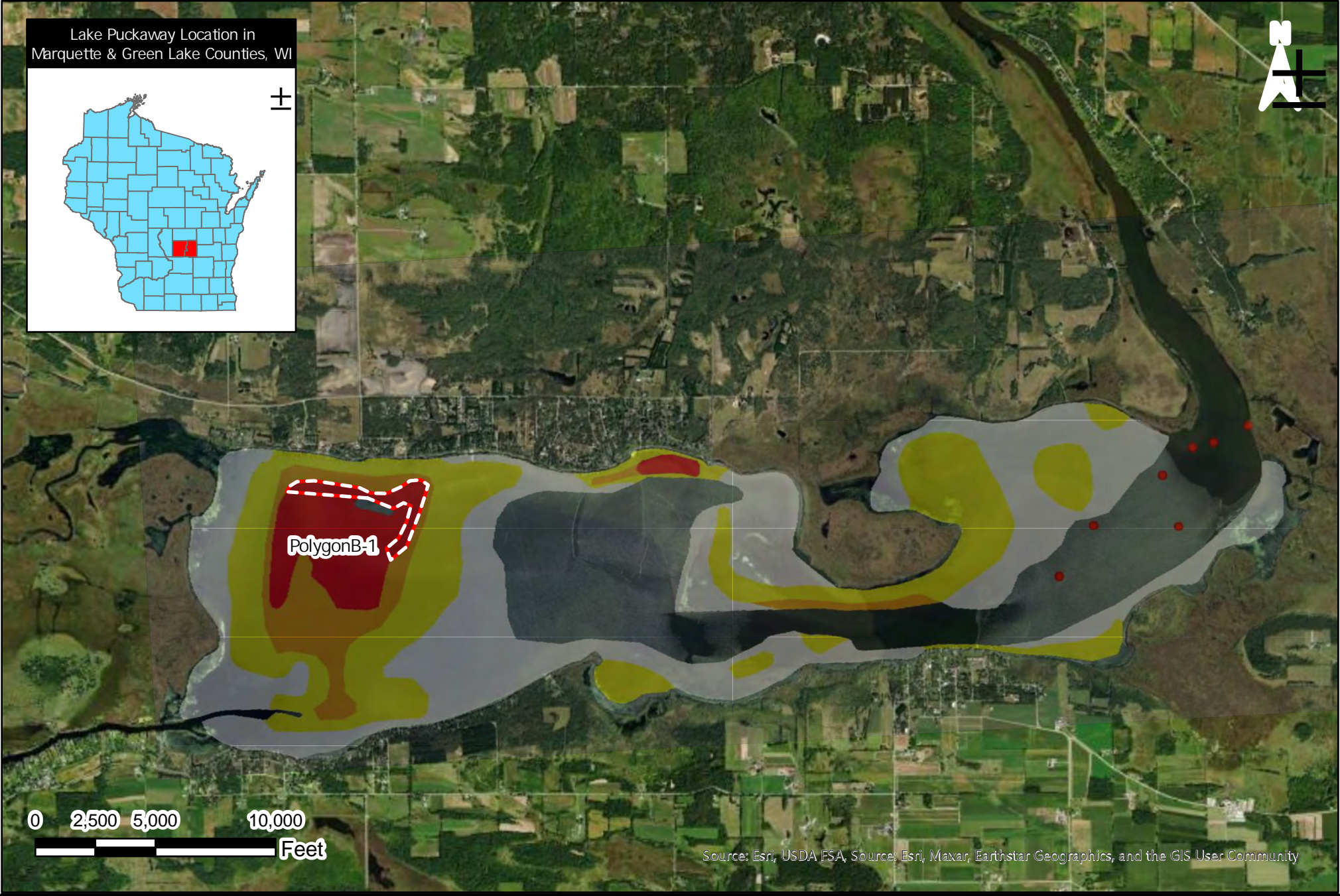
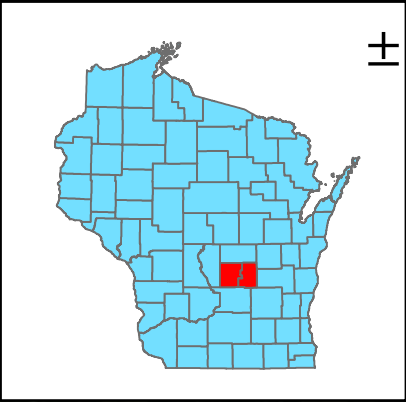
Dominance	Acres
Scattered	1672
Dominant	1142.6
Highly Dominant	294.5
Surface Matted	308.5
<b>TOTAL</b>	<b>3417.6</b>

**2022 Aquatic Plant Survey**  
 Eurasian Water-milfoil  
*Myriophyllum spicatum*

Lake Puckaway  
 Green Lake & Marquette County


Figure 1  
 Surveyed: 09/15-16/2022

Lake Puckaway Location in Marquette & Green Lake Counties, WI



Source: Esri, USDA FSA, Source: Esri, Maxar, Earthstar Geographics, and the GIS User Community

**Legend**

 Proposed Treatment Areas - Option B

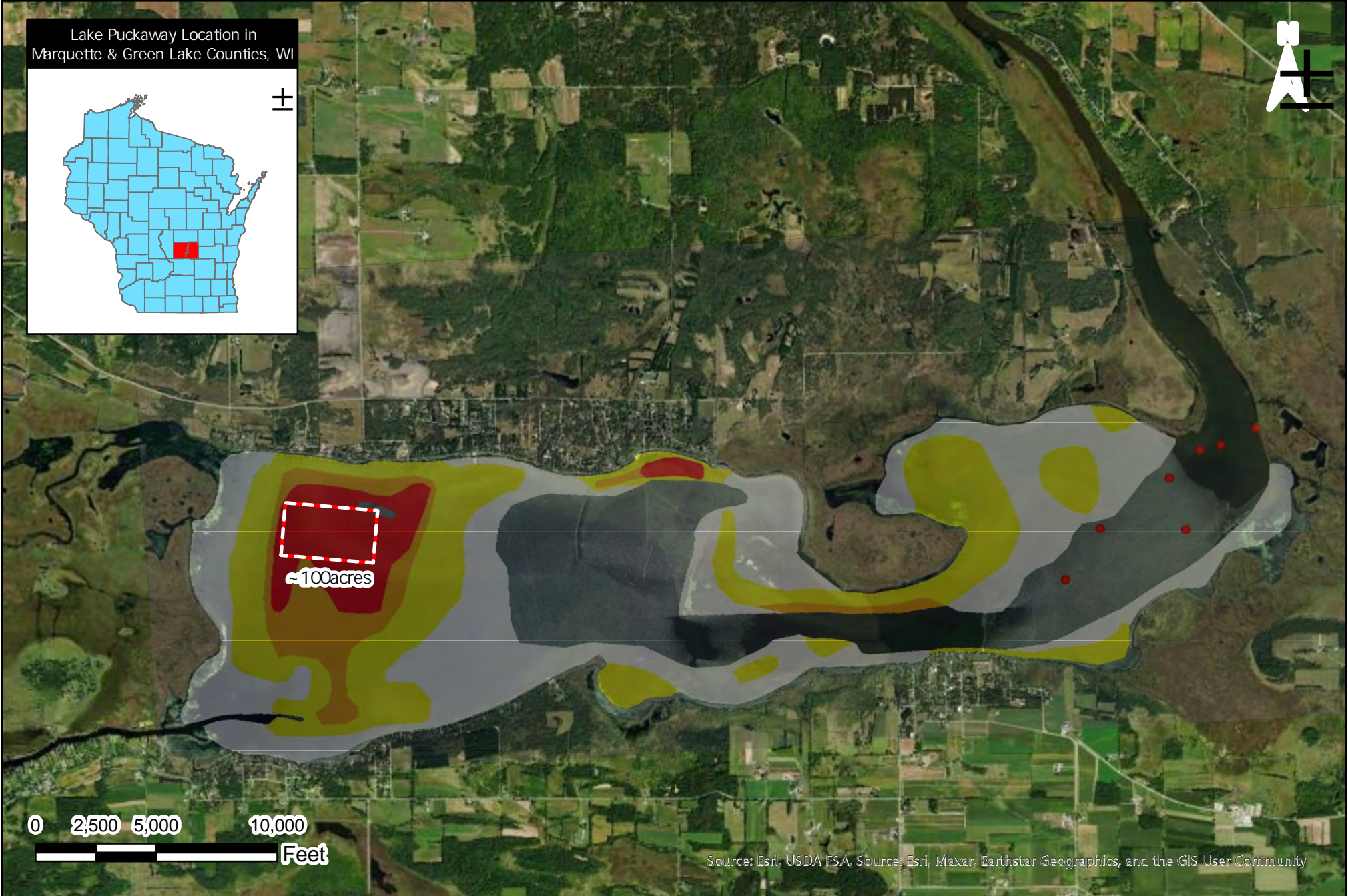
Proposed 2023 EWM Treatment Map (Option B)		
<b>FIELD DATE(S):</b> 5/24-26/2022	<b>CLIENT:</b> Legend Lake Protection and Rehabilitation District	<b>CITY:</b> Keshena
<b>DRAWN DATE:</b> 3/2/2023	<b>COUNTY:</b> Marquette & Green Lake Counties	<b>STATE:</b> Wisconsin

**Cason**  
LAND & WATER MANAGEMENT, LLC  
LAKES · PONDS · WETLANDS  
PRAIRIES · FORESTS · STREAMS

PO Box 230, Berlin, WI 54923  
www.CasonLand-Water.com

MAP NUMBER:  
**1**  
of  
**1**

Lake Puckaway Location in Marquette & Green Lake Counties, WI



Source: Esri, USDA FSA, Source: Esri, Maxar, Earthstar Geographics, and the GIS User Community

**Legend**

 ~ 100acres

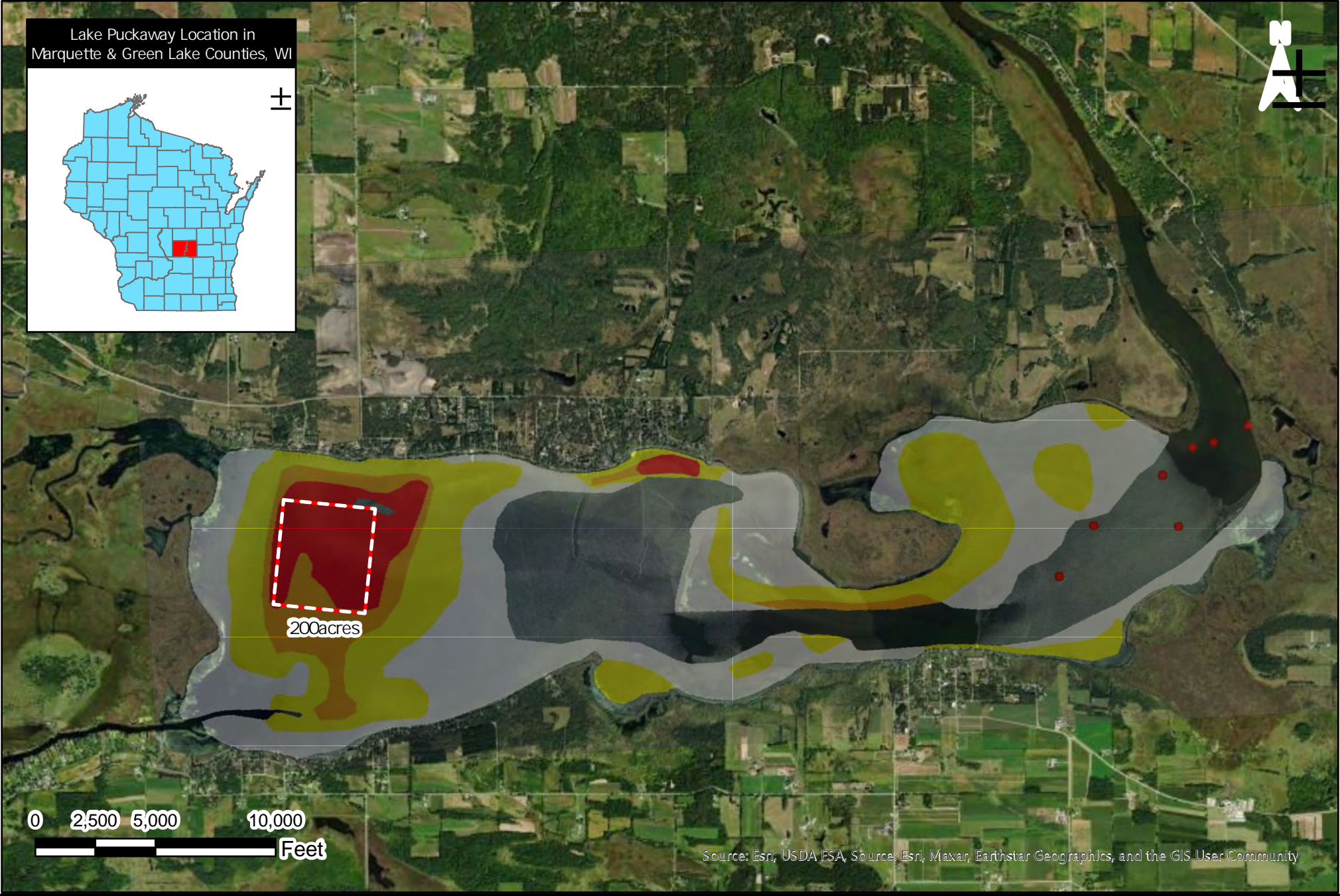
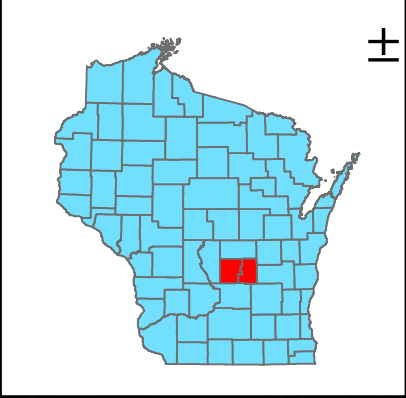
Proposed 2023 EWM Treatment Map (100 Acre Example)		
<b>FIELD DATE(S):</b> 5/24-26/2022	<b>CLIENT:</b> Legend Lake Protection and Rehabilitation District	<b>CITY:</b> Keshena
<b>DRAWN DATE:</b> 3/3/2023	<b>COUNTY:</b> Marquette & Green Lake Counties	<b>STATE:</b> Wisconsin

**Cason**  
LAND & WATER MANAGEMENT, LLC  
LAKES · PONDS · WETLANDS  
PRAIRIES · FORESTS · STREAMS

PO Box 230, Berlin, WI 54923  
www.CasonLand-Water.com

MAP NUMBER:  
**1**  
of  
**1**

Lake Puckaway Location in Marquette & Green Lake Counties, WI



Source: Esri, USDA FSA, Source: Esri, Maxar, Earthstar Geographics, and the GIS User Community

**Legend**  
 ~ 200acres

**Proposed 2023 EWM Treatment Map (200 Acre Example)**

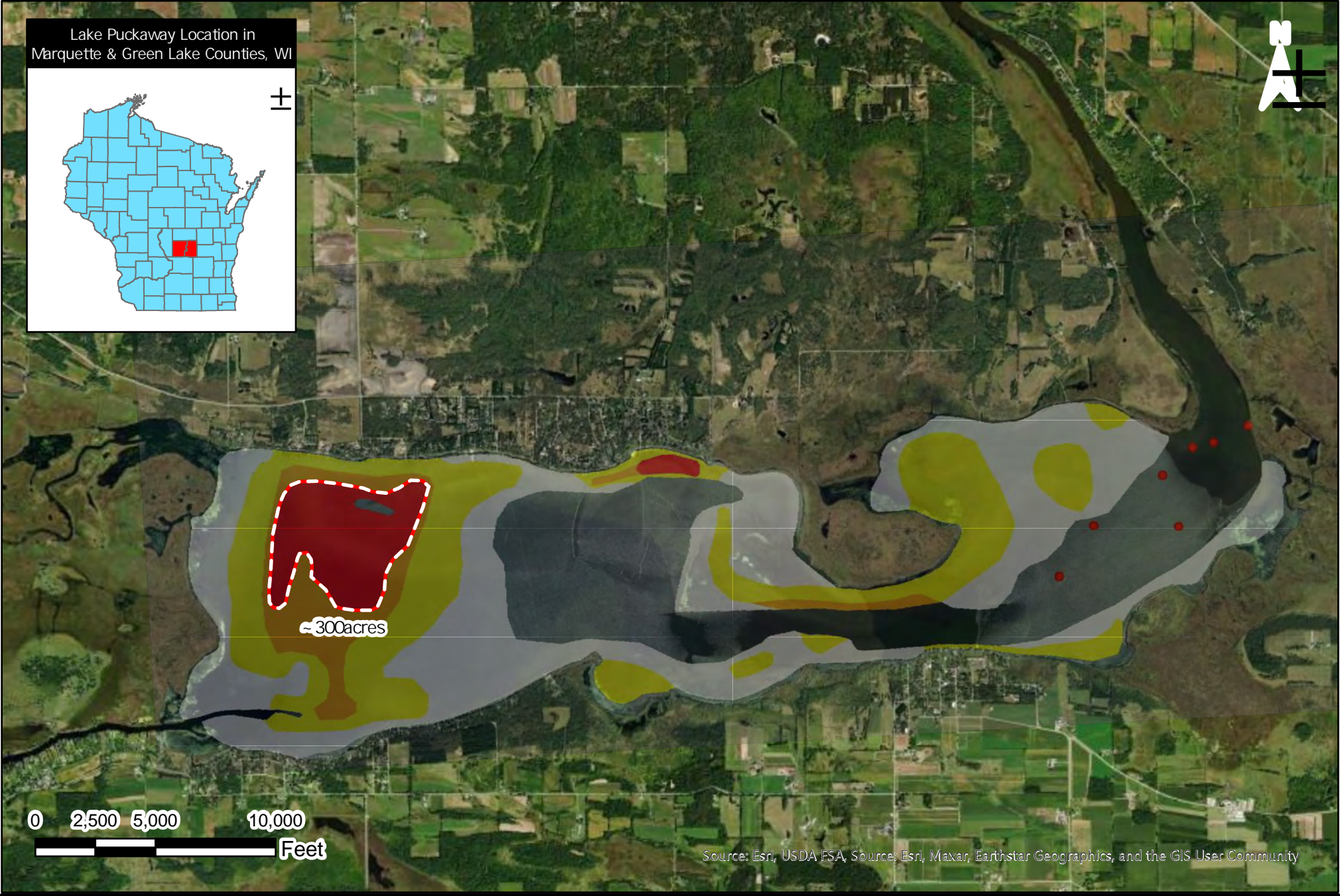
<b>FIELD DATE(S):</b> 5/24-26/2022	<b>CLIENT:</b> Legend Lake Protection and Rehabilitation District	<b>CITY:</b> Keshena
<b>DRAWN DATE:</b> 3/3/2023	<b>COUNTY:</b> Marquette & Green Lake Counties	<b>STATE:</b> Wisconsin

**Cason**  
 LAND & WATER MANAGEMENT, LLC  
 LAKES · PONDS · WETLANDS  
 PRAIRIES · FORESTS · STREAMS

PO Box 230, Berlin, WI 54923  
[www.CasonLand-Water.com](http://www.CasonLand-Water.com)

MAP NUMBER:  
**1**  
 of  
**1**

Lake Puckaway Location in Marquette & Green Lake Counties, WI



Source: Esri, USDA FSA, Source: Esri, Maxar, Earthstar Geographics, and the GIS User Community

**Legend**

 ~ 300acres

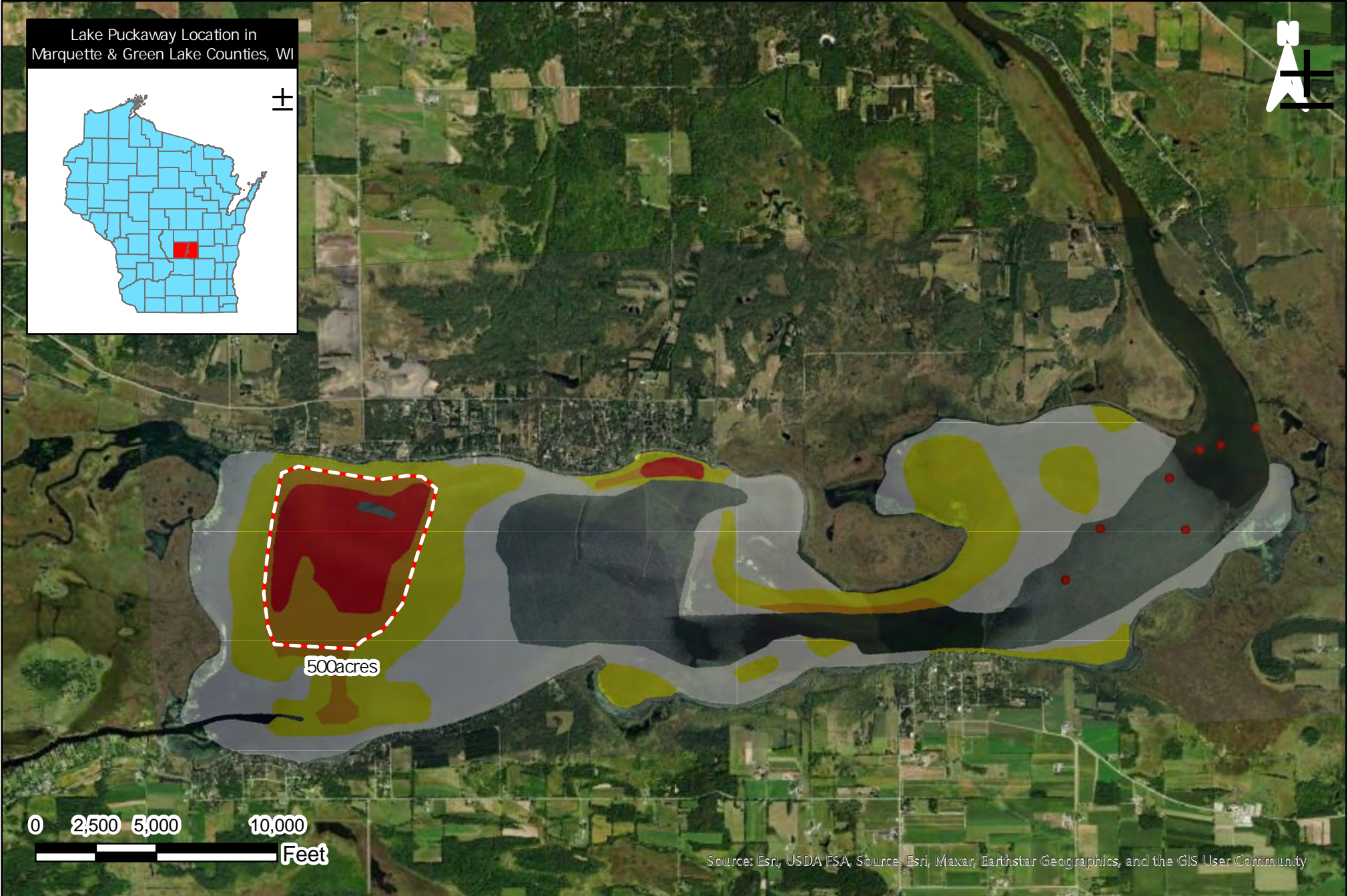
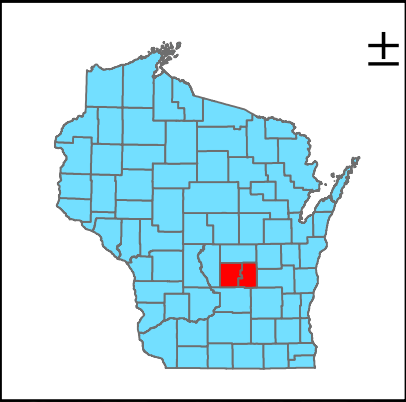
Proposed 2023 EWM Treatment Map (300 Acre Example)		
<b>FIELD DATE(S):</b> 5/24-26/2022	<b>CLIENT:</b> Legend Lake Protection and Rehabilitation District	<b>CITY:</b> Keshena
<b>DRAWN DATE:</b> 3/3/2023	<b>COUNTY:</b> Marquette & Green Lake Counties	<b>STATE:</b> Wisconsin

**Cason**  
LAND & WATER MANAGEMENT, LLC  
LAKES · PONDS · WETLANDS  
PRAIRIES · FORESTS · STREAMS

PO Box 230, Berlin, WI 54923  
www.CasonLand-Water.com

MAP NUMBER:  
**1**  
of  
**1**

Lake Puckaway Location in Marquette & Green Lake Counties, WI



500acres



Source: Esri, USDA FSA, Source: Esri, Maxar, Earthstar Geographics, and the GIS User Community

**Legend**

 500acres

**Proposed 2023 EWM Treatment Map  
(500 Acre Example)**

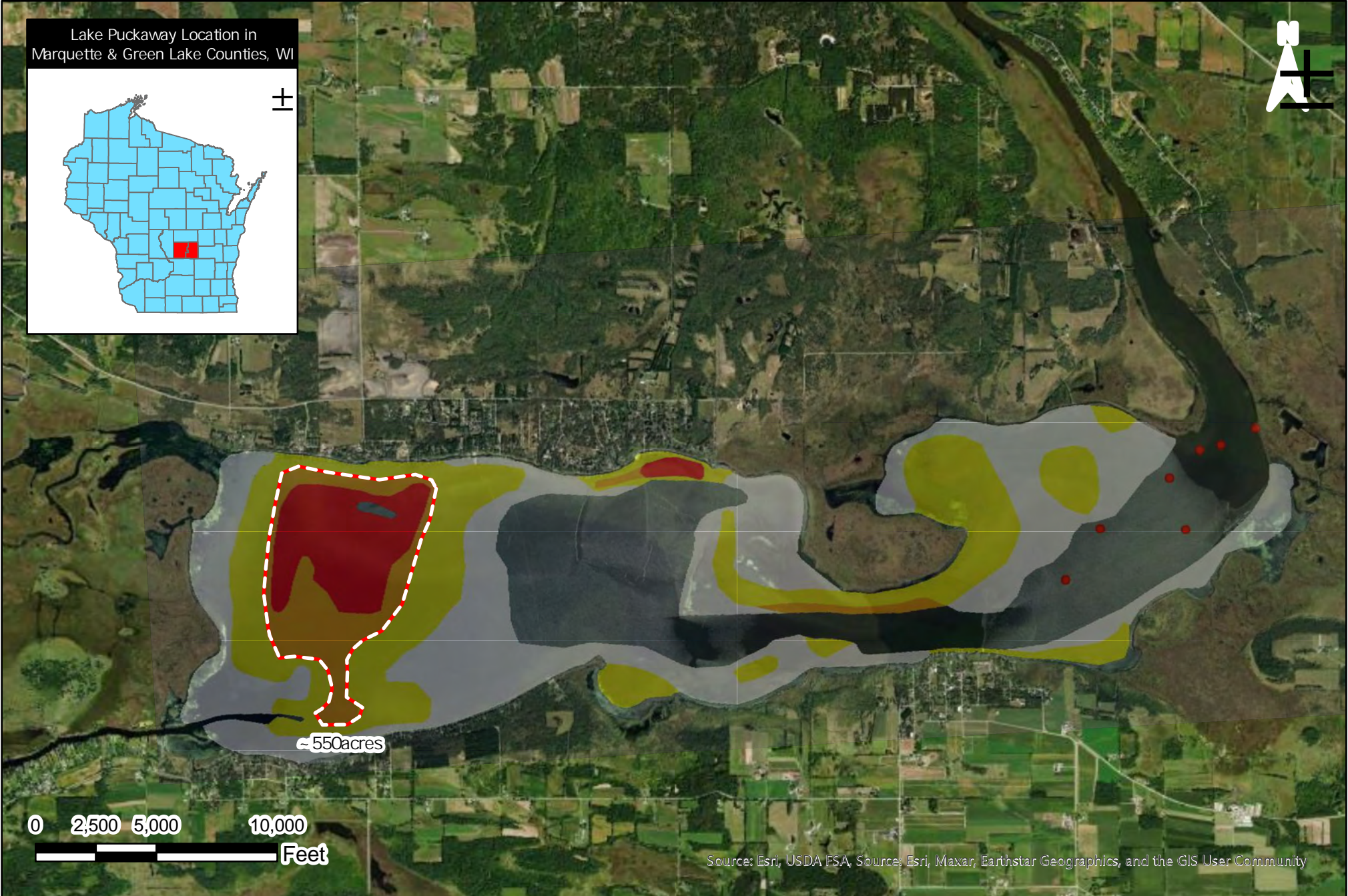
<b>FIELD DATE(S):</b> 5/24-26/2022	<b>CLIENT:</b> Legend Lake Protection and Rehabilitation District	<b>CITY:</b> Keshena
<b>DRAWN DATE:</b> 3/3/2023	<b>COUNTY:</b> Marquette & Green Lake Counties	<b>STATE:</b> Wisconsin

**Cason**  
LAND & WATER MANAGEMENT, LLC  
LAKES · PONDS · WETLANDS  
PRAIRIES · FORESTS · STREAMS

PO Box 230, Berlin, WI 54923  
www.CasonLand-Water.com

MAP NUMBER:  
**1**  
of  
**1**

Lake Puckaway Location in Marquette & Green Lake Counties, WI



Source: Esri, USDA FSA, Source: Esri, Maxar, Earthstar Geographics, and the GIS User Community

**Legend**

 ~ 550acres

Proposed 2023 EWM Treatment Map (~550 Acre Example)		
<b>FIELD DATE(S):</b> 5/24-26/2022	<b>CLIENT:</b> Legend Lake Protection and Rehabilitation District	<b>CITY:</b> Keshena
<b>DRAWN DATE:</b> 3/3/2023	<b>COUNTY:</b> Marquette & Green Lake Counties	<b>STATE:</b> Wisconsin

**Cason**  
LAND & WATER MANAGEMENT, LLC  
LAKES · PONDS · WETLANDS  
PRAIRIES · FORESTS · STREAMS

PO Box 230, Berlin, WI 54923  
www.CasonLand-Water.com

MAP NUMBER:  
**1**  
of  
**1**



P.O. Box 230  
 Berlin, WI 54923  
 Phone: 920-361-4088  
 Fax: 920-361-4086

www.CasonLand-Water.com

## Treatment Cost Estimator

FOR: Lake Puckaway  
 LOCATION: Option B (50 acres)  
 WATERBODY SIZE: 5,013 acres  
  
 PRODUCT: ProcellaCor (Florpyrauxifen-benzyl)  
 TARGET CONCENTRATION: 5PDU/acre-foot

### Product Costs

Product	Acreage	Average Depth (ft)	Volume (ac ft)	Amount of Product (PDU)	Product Unit Cost (PDU)	Total Cost
ProcellaCOR	50.00	4	200	1000.00	\$ 70.00	\$70,000.00
<b>TOTALS:</b>	<b>1</b>	<b>N/A</b>	<b>200.00</b>	<b>1000.00</b>	<b>N/A</b>	<b>\$ 70,000.00</b>

### Total Project Costs

Expense	Cost Type	Cost	Total Cost
Setup	Fixed	\$450	\$ 450.00
Application Labor	Variable	\$125/acre	\$ 6,250.00
Product	Variable	see table	\$ 70,000.00
<b>Total Project Cost:</b>			<b>\$ 76,700.00</b>

*This estimate is valid until December 31, 2023. Materials and Service Costs are subject to increase with changes in the market. If changes occur, a new cost estimator will be sent.*